

Public Information

Sandstone

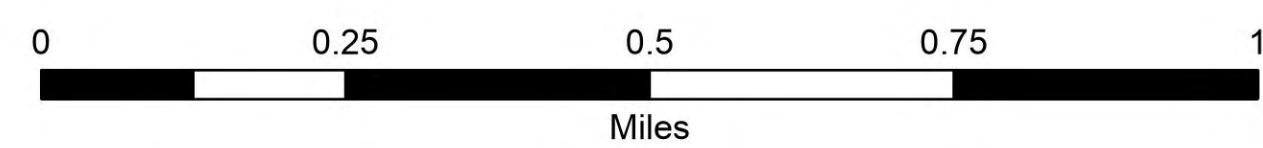
08/19/2024 Day

Sandstone 702 acres

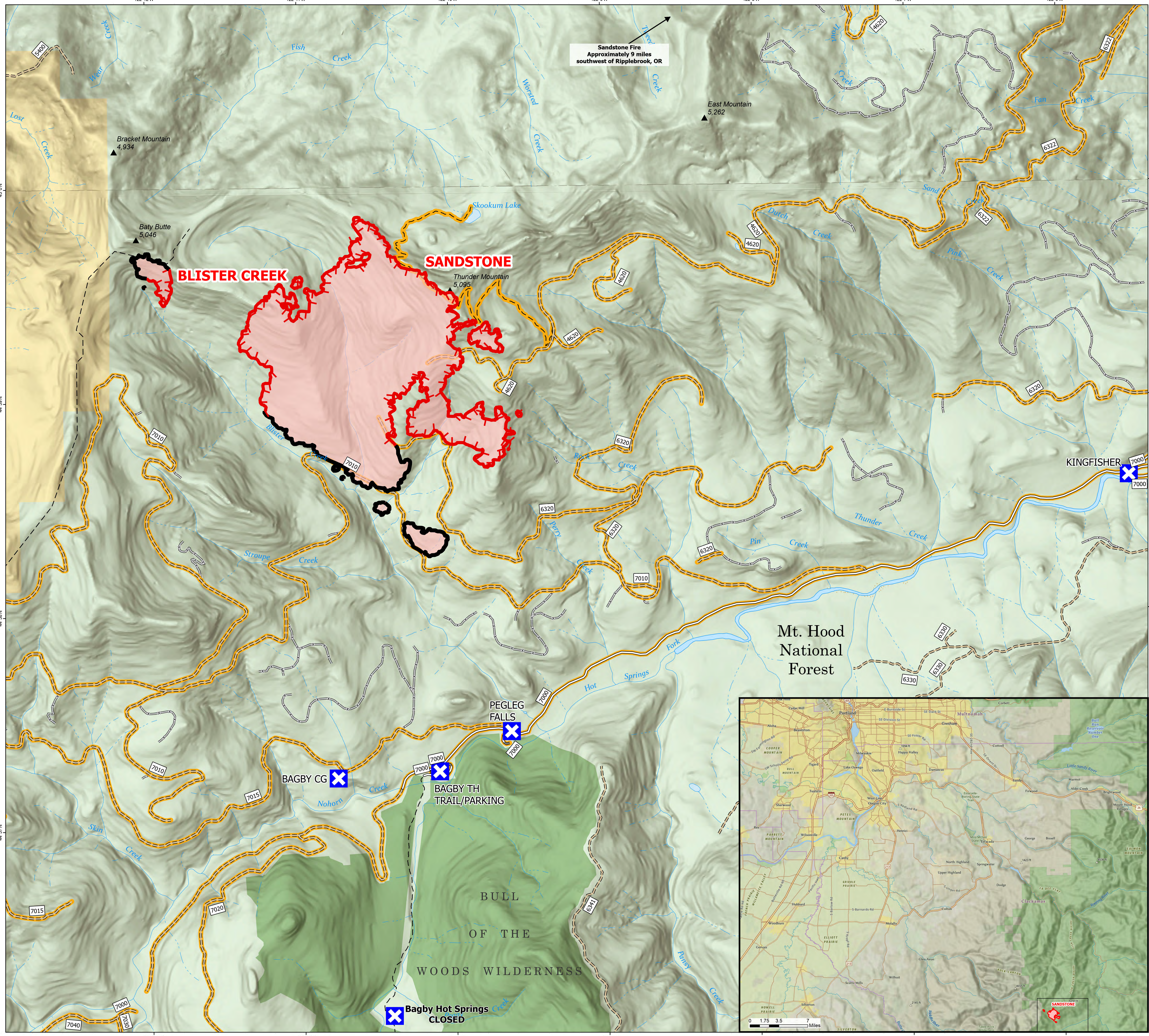
Blister Creek 17 acres

at 20240817 @ 2103 PDT Hrs

- Road/Trail Closure
- FS Closed Road
- Closure
- Trail
- Road, Paved
- Road, Dirt/Gravel
- Road, high clearance
- USFS Wilderness
- Forest Service Land
- Bureau of Land Management Lands
- Perimeter Line
 - Contained
 - Uncontained
 - Wildfire Daily Fire Perimeter



1:10,000 | NW IMT 10 | 8/18/2024 2108
Acres from IR Acres from IR
North American 1983 Datum, Lat-Long Grid



Sandstone Fire
Approximately 9 miles
southwest of Ripplebrook, OR

East Mountain
5,262

Bracket Mountain
4,934

Baty Butte
5,046

Thunder Mountain
5,095

KINGFISHER
7000

PEGLEG
FALLS
7000

BAGBY CG
7015

BAGBY TH
TRAIL/PARKING
7000

Bagby Hot Springs
CLOSED

Mt. Hood
National
Forest

BULL
OF THE
WOODS WILDERNESS

